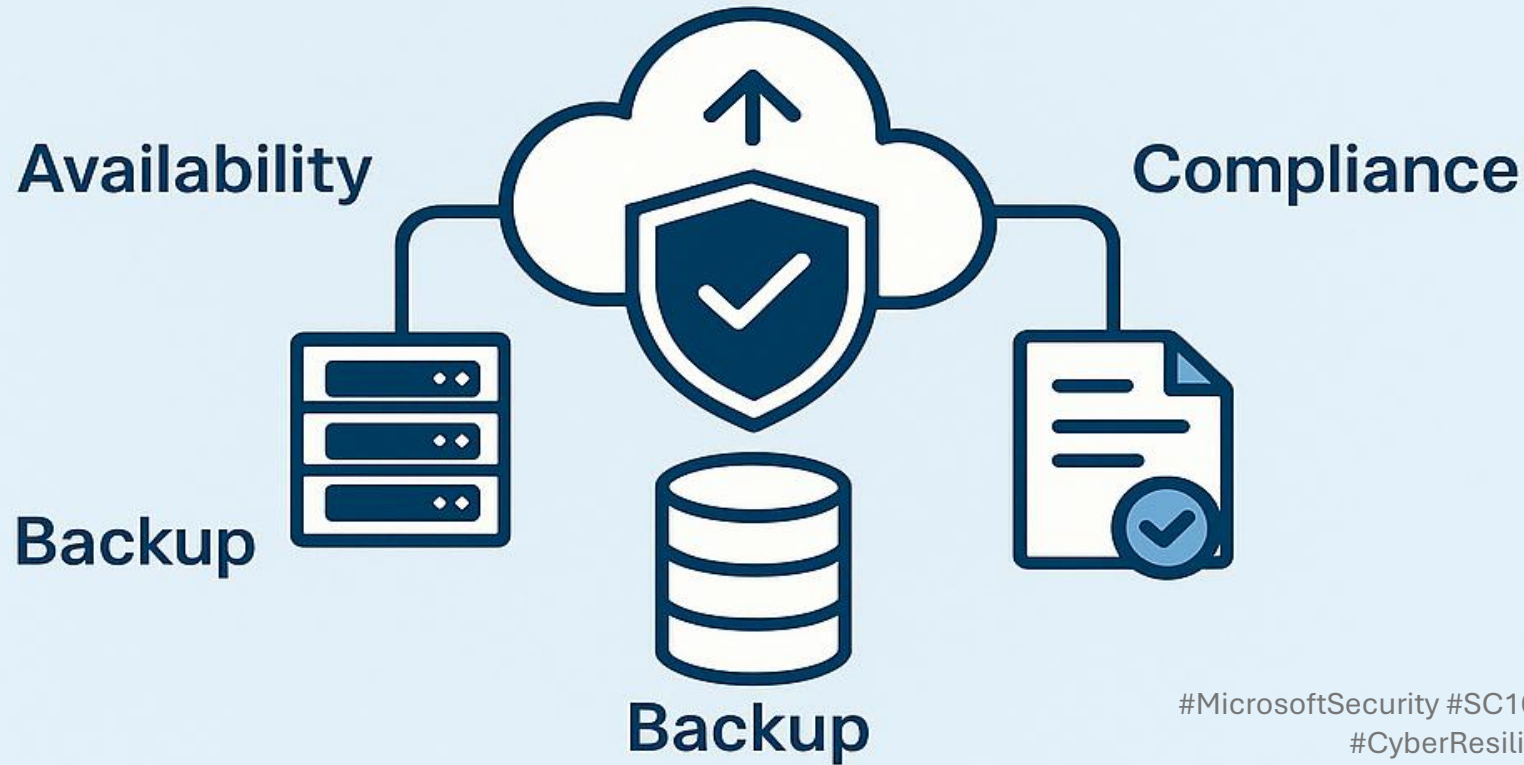


Architecting Business Resilience in Azure & Microsoft 365



#MicrosoftSecurity #SC100 #AzureArchitecture #ZeroTrust
#CyberResilience #PerparimLabs

From outages to cyberattacks – resilience starts with strategy.

Why Resilience Is Mission-Critical

Outages, ransomware, human errors, and natural disasters are inevitable.

You can't secure what you don't prioritize.

A resilient design ensures **continuous service, data protection, and compliance** — even in a crisis.

Core Business Resiliency Goals



1. High Availability – Keep services online with zone-redundant and region-paired resources



2. Disaster Recovery – Prepare for failure with backups and failover strategies

3. Data Durability – Ensure no data is lost or corrupted across time and space



4. Operational Responsiveness – Detect, respond, and recover quickly from incidents



5. Compliance & Security – Meet regulatory requirements with governance and protection






How We Achieve These Goals

Resiliency Goal	Azure / M365 Strategy
High Availability	Azure Load Balancer, Availability Zones, Region Pairing
Disaster Recovery	Azure Backup, Azure Site Recovery, Cross-region replication
Data Durability	GRS/RA-GRS, Immutable Storage, Redundancy Options
Operational Responsiveness	Azure Monitor, Defender for Cloud, Log Alerts, Health Services
Compliance & Security	Microsoft Purview, Defender for Cloud, Azure Policy, PIM

Threat Prioritization Framework




STEP 1 – RISK ASSESSMENT

 IDENTIFY
INTERNAL/EXTERNAL
WEAKNESSES: CLOUD
MISCONFIG,
SOFTWARE FLAWS,
HUMAN ERRORS




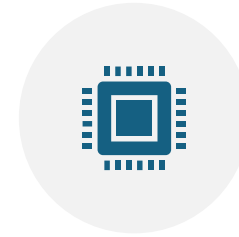
STEP 2 – THREAT MODELING

 UNDERSTAND
HOW THOSE
WEAKNESSES COULD
BE EXPLOITED




STEP 3 – CRITICALITY ANALYSIS

 PRIORITIZE
BUSINESS FUNCTIONS
(E.G., POS > WEBSITE
IF 99% REVENUE IS IN-
STORE)




STEP 4 – COMPLIANCE REQUIREMENTS

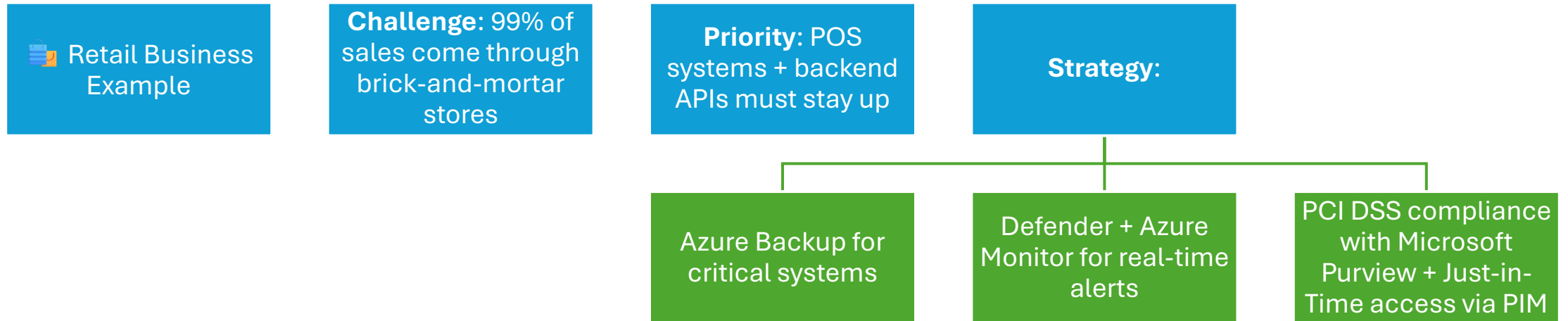
 ACCOUNT FOR
HIPAA, PCI DSS, GDPR
— BASED ON
INDUSTRY



STEP 5 – CONTINUOUS MONITORING

 USE DEFENDER,
SENTINEL, MONITOR
TO MAINTAIN
SECURITY POSTURE IN
REAL TIME

Real-World Scenario



Security Posture = Ongoing Discipline

“You can’t set it and forget it.”

✓ Continuous monitoring = Continuous improvement

Use tools like:

Microsoft Defender for Cloud

Azure Secure Score

Microsoft Sentinel

Azure Policy

Compliance Manager in Microsoft 365

Good posture = readiness for real threats.

Interview Tip – What to Say





Community Call to Action

💬 **What's the most critical business system in your org — and how resilient is it?**

👉 Drop your thoughts, I'd love to hear from other security architects.