

Implementing Security & Governance with Azure Landing Zones

Scalable, Modular Governance
Framework for Azure



#Azure #LandingZones #CloudGovernance #AzureSecurity
#AzureArchitect #PerparimLabs

What is an Azure Landing Zone?



Not a resource → it's a **framework/strategy**.



Provides design principles for **security, scalability, modernization, and governance**.



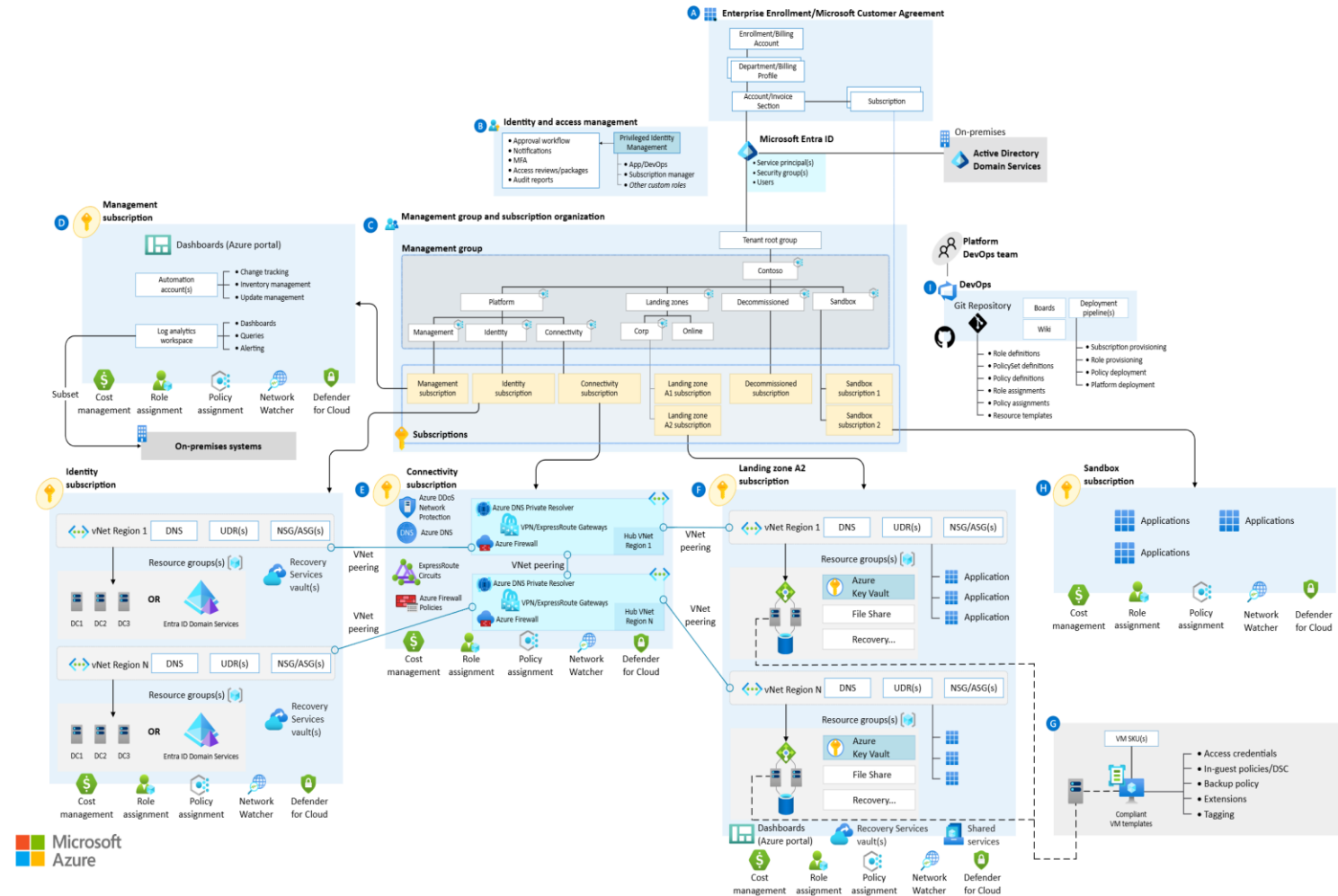
Ensures that as your environment grows, resources stay consistent, secure, and easy to manage.

Core Concepts

Landing zones use subscriptions and management groups to apply consistent governance controls such as cost, policies, monitoring, and security across all resources.

- **Subscriptions = landing zones** (isolating workloads).
- **Management Groups** organize subscriptions hierarchically.
- **Controls applied at subscription level:**
 - Cost management
 - Role assignments
 - Azure Policies
 - Network Watcher & Defender for Cloud

💡 *Everything deployed under that subscription automatically inherits governance controls.*



Version: 2024-06-18

#Azure #LandingZones #CloudGovernance #AzureSecurity
#AzureArchitect #PerparimLabs

Governance in Action



When you deploy VMs, databases, apps inside the landing zone subscription:



All resources inherit the same **policies, security, and monitoring**.



Identity & access tied to **Microsoft Entra ID** (formerly Azure AD).



Ensures **consistency + compliance** across all workloads.



Cost management and Defender for Cloud ensure both financial and security oversight.

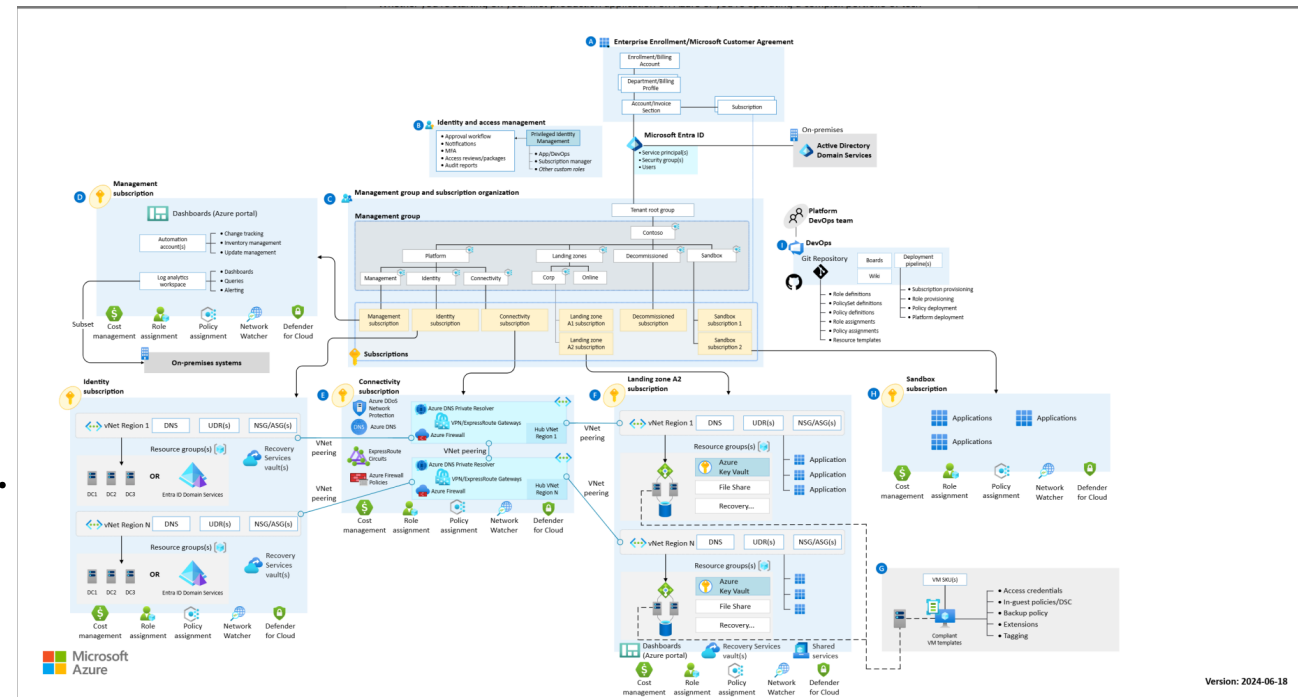
Types of Landing Zones

Platform Landing Zone

- Shared services (identity, networking, monitoring).
- Foundation for apps & workloads.

Application Landing Zone

- Dedicated subscription for hosting apps.
- Pre-provisioned with policies, roles, and controls.
- Deployable at scale via **ARM templates or Azure Blueprints** (cookie-cutter style).

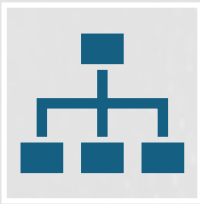


- Platform landing zones = shared services (identity, networking, monitoring)
- Application landing zones = dedicated subscriptions with pre-applied policies and controls.

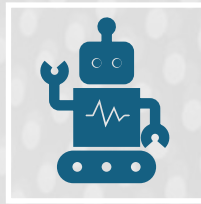
Lab/Industry Example

- In a lab setup, I used Azure Landing Zones to demonstrate governance at scale. By organizing subscriptions under management groups and applying policies for cost, identity, and security, every new resource inherited the same governance controls. With Azure Blueprints, I quickly deployed multiple environments while maintaining consistent security baselines.

Key Takeaways



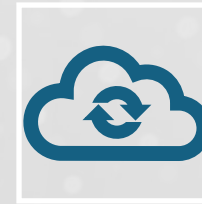
Landing zones = **strategic governance model**, not a single resource.



Scalable & modular → supports growth, modernization, and security.



Centralized governance ensures **policies, monitoring, and access control** flow automatically.



Best practice: treat landing zones as the **foundation for enterprise Azure governance**.