



Microsoft Entra Connect vs. Cloud Sync – What's the Difference?


🎓 Understanding the difference in hybrid identity synchronization




Perparim Abdullahu AZ-305 Certified |
SC-300 in Progress | #PerparimLabs

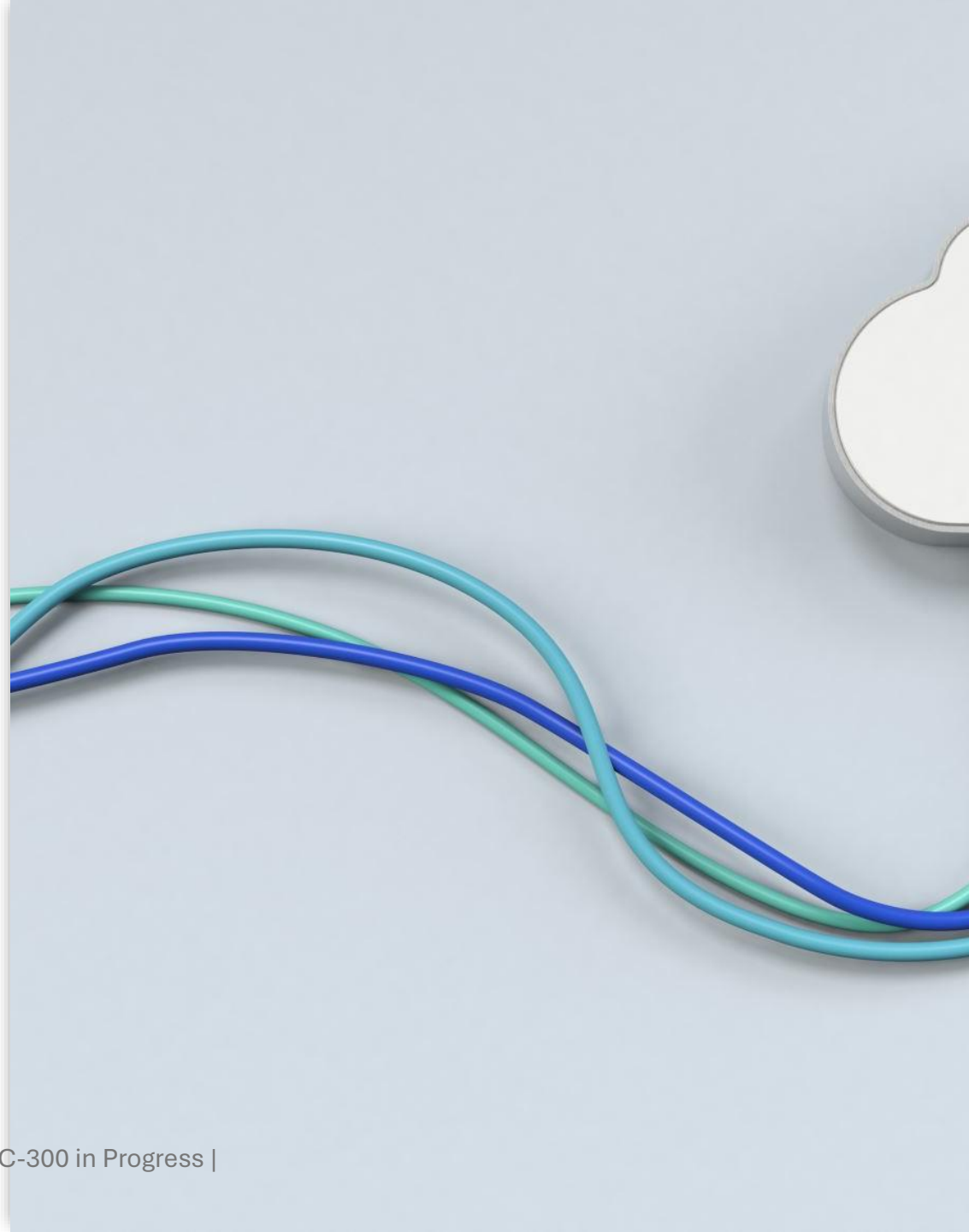
Perparim Abdullahu AZ-305 Certified | SC-300 in Progress |
#PerparimLabs

Why It Matters

 Both sync on-prem identities to Microsoft Entra ID

 One is full-featured (Microsoft Entra Connect)

 One is lightweight & cloud-managed (Cloud Sync)



Microsoft Entra Connect (Traditional)

- ✓ Full feature set
- ✓ Supports multiple forests
- ✓ Password hash sync, PTA, federation
- ! Heavier install, more management

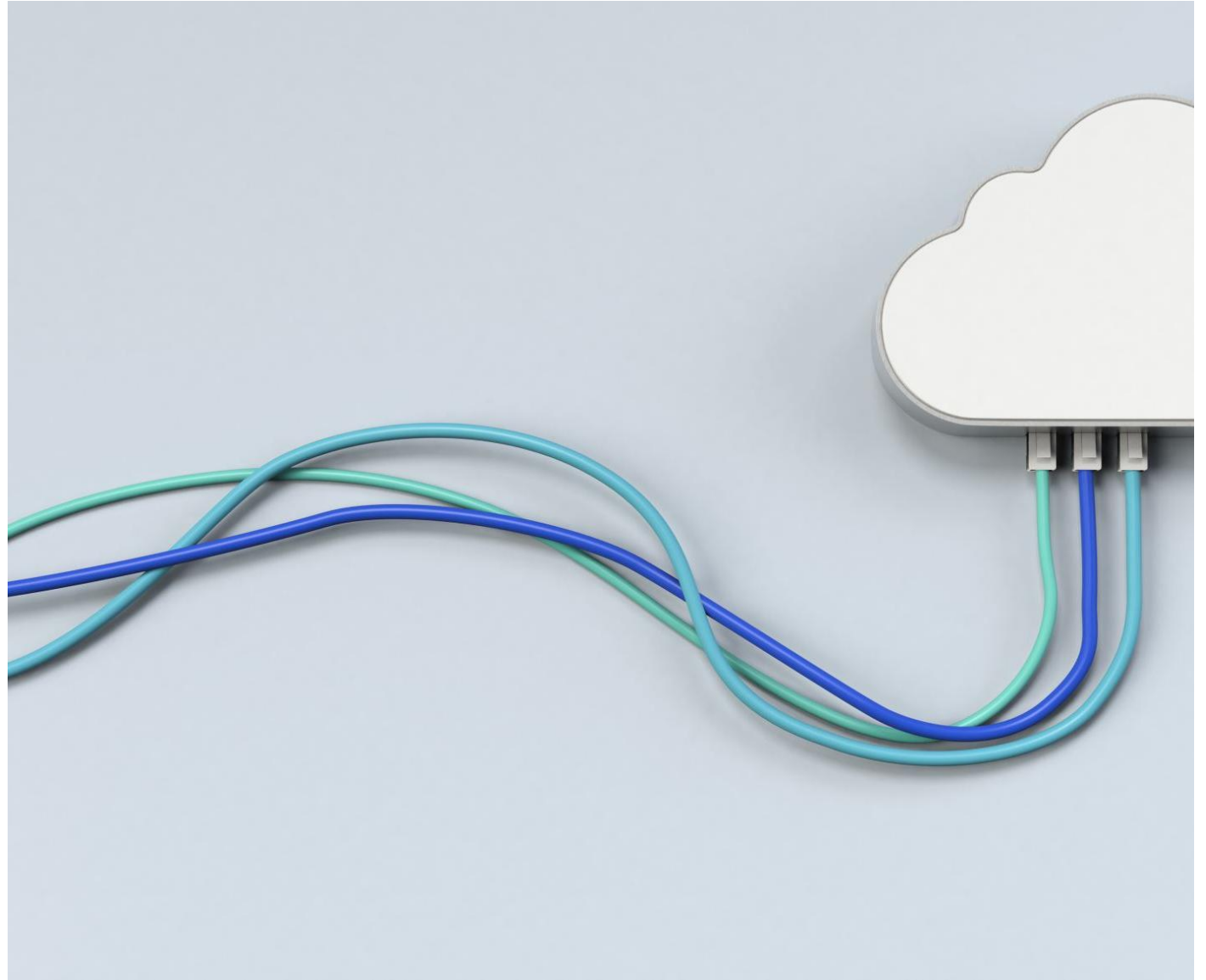


Cloud Sync

🧩 Lightweight agent on-prem

📶 Managed via Entra Admin Center

⛔ Doesn't support all advanced features (e.g. device sync, group writeback)



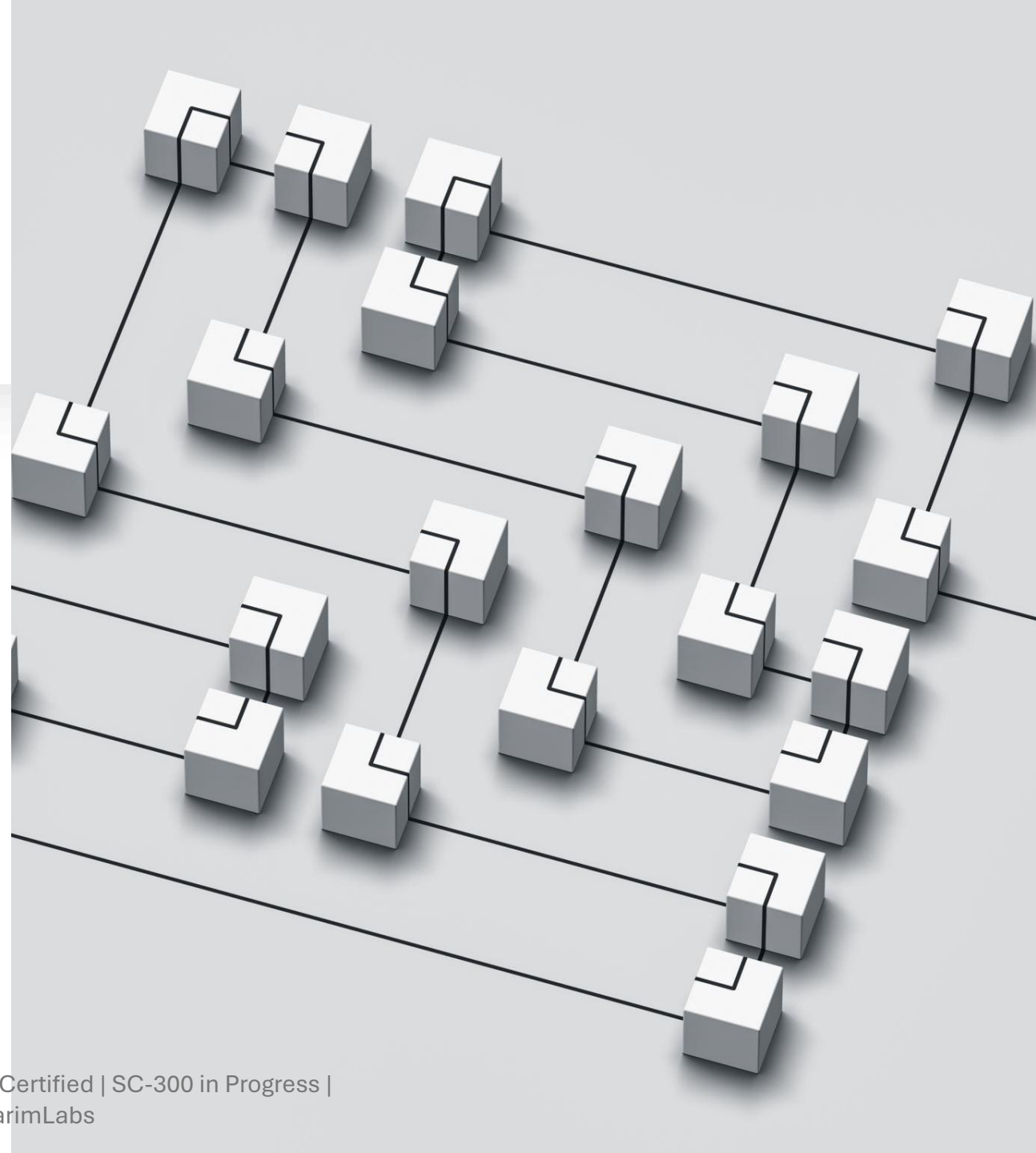
Use Case Scenarios

🟦 Microsoft Entra Connect Sync

- ✓ Best for large or complex environments
- ✓ Supports multiple forests, writeback, and more
- 🏢 Used when full feature control is needed



🟦 Microsoft Entra Cloud Sync

- ✓ Ideal for small to medium organizations
- ✓ Lightweight agent, easy to deploy
- 💻 Great for simple, one-domain environments





Cool Feature: Provision on Demand

-  Sync one user manually from on-prem
-  Great for testing or troubleshooting



Bonus: You Can Run Both



💡 Microsoft Entra Connect
and Cloud Sync can coexist



🧪 Useful if testing
migration or backup sync
methods

Key Takeaways

Know the difference

Use the right tool for your
environment

You don't need to install it to
understand it like a pro 🧠

Call to Action

🗨️ *Are you using Cloud Sync or Microsoft Entra Connect?*

💬 Let's talk hybrid identity in the comments
👉